



From [Future New York](#)

Soho's 150 Wooster Nearly Sold Out, Final Spread Hits the Market for \$14.75M



By [Michelle Mazzarella](#)
Today, January 8, 2018



150 Wooster via KUB

When [KUB](#) conceived of [150 Wooster Street](#) in the Soho Cast-Iron Historic District, it did so with an eye on [Soho's](#) history as well as its future. The design paid tribute to the neighborhood's industrial past. Indeed, this particular stretch is surrounded by the cast-iron fronts, Belgian block streets, and galleries that brought Soho to prominence in the past, not to mention the shopping that draws tourists and locals alike today.



Living room via Core

Sales launched in [October](#), and the building is nearly sold out. [Loft Two](#), a full-floor, four-bedroom, four-bath, has just come on the market for \$14.75 million. This price of \$3,361 per square foot puts it at nearly 1.5 times the Soho average, and perhaps quite rightly. The open spaces and large-scale windows pay tribute to the artists' lofts of the 1960s and 1970s, yet the home is prewired for smart home automation and features an integrated Lutron lighting system, automated shades on the windows, and in-unit laundry room for all the modern conveniences a buyer could want. The expansive living and dining areas are separated by a sculptural gas fireplace.



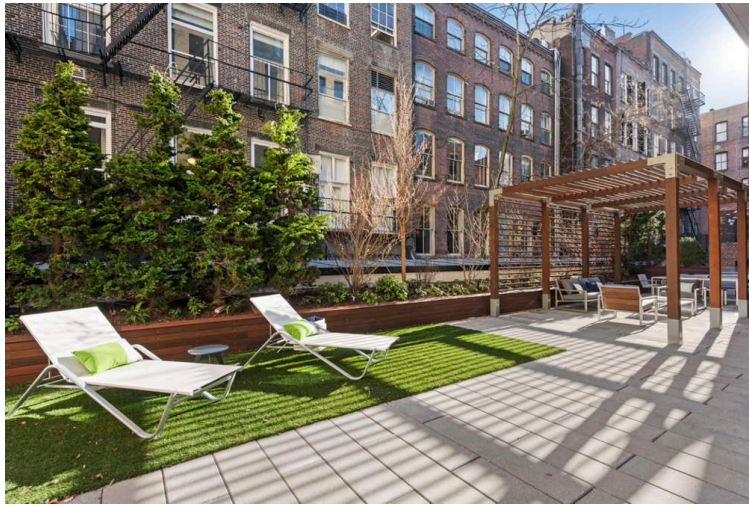
Kitchen via Core

The chef's kitchen is equipped with a Danby marble island, countertops, and cabinet faces, state-of-the-art appliances, and large walk-in pantry.



Bath via Core

The spa-like master bath features Danby marble custom vanity and mosaic floors and slab walls, a six-foot soaking tub, and separate water closet.



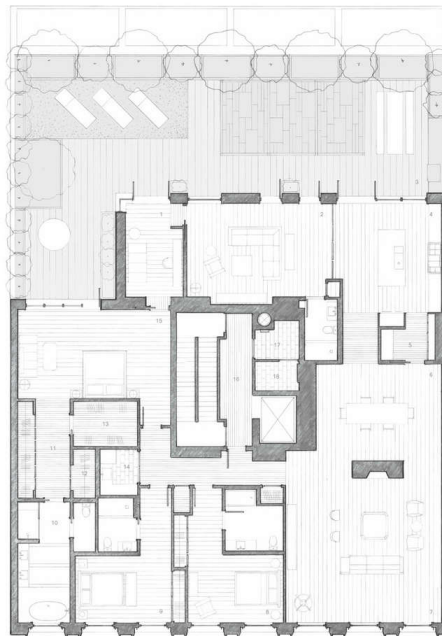
Outdoor space via Core

As impressive as the apartment's interiors are, the piece de resistance can be found outside: A 1,907-square-foot private garden with an outdoor kitchen was practically designed for entertaining.

150 WOOSTER

Two-Story Flat with 2 Bathrooms, 4 Bedrooms, Open-Plan Kitchen with 100 Square Feet, Outdoor Kitchen, Glass-Door Closet

TWO



- 1. Master Suite
14'0" x 14'0"
- 2. Bedroom Suite
12'0" x 12'0"
- 3. Bedroom
12'0" x 12'0"
- 4. Bedroom
12'0" x 12'0"
- 5. Bedroom
12'0" x 12'0"
- 6. Bedroom
12'0" x 12'0"
- 7. Bedroom
12'0" x 12'0"
- 8. Bedroom
12'0" x 12'0"
- 9. Bedroom
12'0" x 12'0"
- 10. Bedroom
12'0" x 12'0"
- 11. Bedroom
12'0" x 12'0"
- 12. Bedroom
12'0" x 12'0"
- 13. Bedroom
12'0" x 12'0"
- 14. Bedroom
12'0" x 12'0"
- 15. Bedroom
12'0" x 12'0"
- 16. Bedroom
12'0" x 12'0"
- 17. Bedroom
12'0" x 12'0"
- 18. Bedroom
12'0" x 12'0"
- 19. Bedroom
12'0" x 12'0"
- 20. Bedroom
12'0" x 12'0"



Architectural drawings prepared by the Architectural Firm of the City of New York, Inc. for the use of the City of New York, Inc. All rights reserved. No part of this drawing may be reproduced without the written permission of the Architectural Firm of the City of New York, Inc.



Floor plan via Core

<https://www.cityrealty.com/nyc/market-insight/features/future-nyc/soho039s-150-wooster-nearly-sold-out-final-spread-hits-market-1475m/15190>